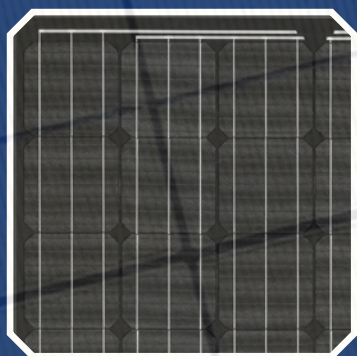


US325/330/335M72B

Monocrystalline PV Module

All black



US325/330/335M72B

STC*

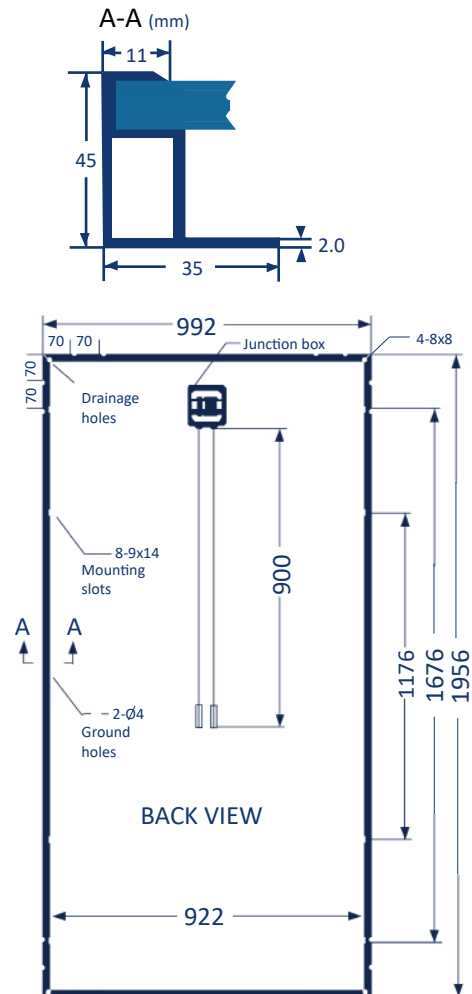
Type	US325M72B	US330M72B	US335M72B
P _{max} [W]	325	330	335
V _{mpp} [V]	39.02	39.17	39.26
I _{mpp} [A]	8.33	8.42	8.53
V _{oc} [V]	47.15	47.22	47.31
I _{sc} [A]	8.99	9.01	9.03
Module efficiency [%]	16.80	17.06	17.32
Cells efficiency [%]	19.08	19.37	19.66
Max. System Voltage	1000V DC	1000V DC	1000V DC

* STC – Standard Test Conditions, measurement conditions: intensity irradiation 1000 W/m², spectral distribution AM 1.5, temperature 25 ± 2°C, according to standard EN 60904-3

** Power Measuring tolerances ± 3%

Mechanical characteristics

Solar Cells	72 crystalline solar cells, 156 x 156 mm
Glass	Solar glass with anti-reflection surface treatment, 3.2 mm
IP protection level	IP65/IP67
Bypass-Diodes	3 pcs.
Cables and connector	Junction box with MC4 (pluggable) connectors, cable: 2 x 900 mm / 4 mm ²
Dimensions (LxWxH)	1956 x 992 x 40 mm
Weight	22.3 kg
Mechanical ratings	Suction pressure of 2400 Pa approved (Wind speed 130 km/h with safety factor 3), load of 5400 Pa approved



Temperature Coefficients

Type	US335M72B Mono all black
NOCT	47 ± 2 °C
P _{max}	- 0.43%/K
V _{oc}	- 0.30%/K
I _{sc}	0.04%/K
Operating Temperature Range	- 40 °C bis + 85 °C

Packaging

Container	20" GP	40" HC
Pallets	12	24
Number per pallet	24	24
Amount	268	556

Unimen Solar reserves the right to change specifications without notice.



Revision 02-2016

Unimen Solar Co., Ltd
Mergenthalerallee 79-81
65760 Eschborn
Germany

Tel.: +49(0)6196 769 1872
Fax: +49(0)6196 777 3897
info@unimen-solar.de
www.unimen-solar.de

